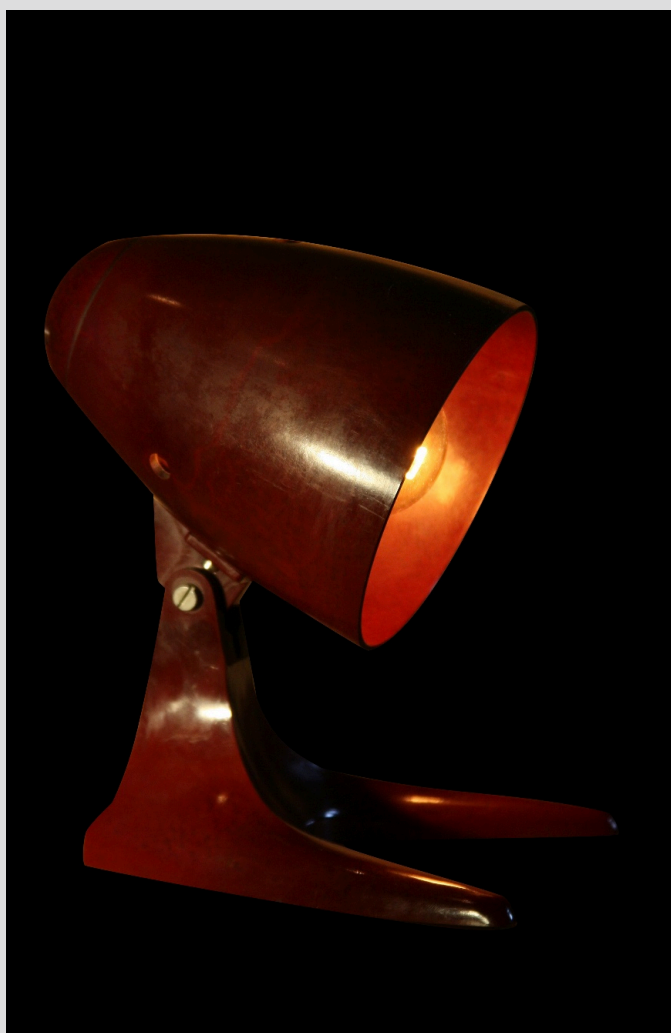


# Vintage Medical lamp Leipzig-Leutzsch, Type KJ2



Price:

Dimensions:

Height: 24 cm

Width: 14 cm

Depth: 22 cm

The length of the electric wire: 1.9 m

Weight: 1 kg

## DESCRIPTION

The Leipzig-Leutzsch lamp was manufactured in the 1960s in Germany, and it was originally used as an illumination emitting infrared light, using a special bulb with a maximum power of 250 W.

Thanks to the universal bulb holder for the E-27 thread, it can be successfully used as an ordinary light source.

## CONSTRUCTION

The lamp's body is made of hard rubber, the base has got a ceramic stabilizing weight. The range of adjustment of the angle of the shade is limited.

The lamp is thoroughly cleaned, the original electrical installation has undergone a professional service.